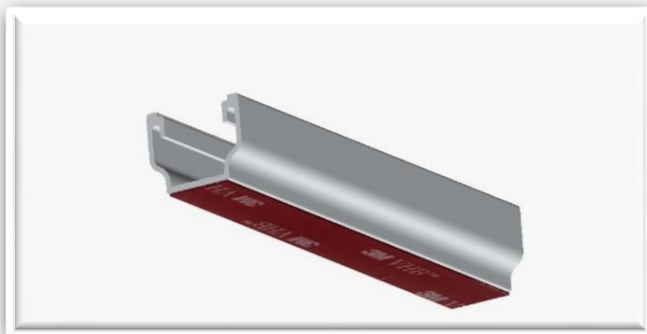


## ES.EASY.PLAN.3M.001



**3M** Science.  
Applied to Life.™



APPLICATION EXAMPLE

## Technical Features

Inclination angle	Coplanar to roof top
Maximum distance between rails	1,00 m
Weight system	0,55 Kg/m <sup>2</sup> (vertical modules)
Weight system including modules	11,73 Kg/m <sup>2</sup> (vertical modules)



## Warranty and quality

- Manufacturing Warranty: **15 years**
- Mounting System Rail of extruded aluminium (EN AW-6060) with thermal treatments (EN 573-3 and EN 755-2). (Special treatments can be applied for aggressive environments, under quotation);
- Stainless Steel-A2 products (DIN ISO 4759/1 and DIN 267/2). (For aggressive environments can be used Stainless steel-A4, under quotation);
- Fixation by 3M double sided tape, for application on the sandwich panels. Fixation warranty up to **25 years**;
- Snow load: 1 kN / m<sup>2</sup> for locations under 1.000 m above the sea level;
- Wind load: For a maximum height of 9m and in type II exposure in compliance with Eurocode, maximum wind speed according to structure calculation. Roof top inclination for maximum up to 45°.

## Benefits

- System for installation of universal clamping module, becoming highly versatile and suitable for all types of modules;
- Adaptation to sandwich panels and metal panels. Custom design solutions;
- Standard or customized solution;
- Easy assembly structure with no need to drill or cut between every component that holds that same structure;
- Extraordinary strength and reliability.